

NEY Product Information



Data Sheet

110° Hinge

Hinges & Lift Systems



NEY Ltd (Head Office)
Stonebridge Trading Estate
Sibree Road
Coventry
CV3 4FD

t 024 7630 8100
f 024 7630 8101
e sales@ney.co.uk

NEY Ireland
Unit 22 Blaris Ind Estate
Altona Road
Lisburn
BT27 5QB

t 028 92 673 000
f 028 92 672 999
e ireland@ney.co.uk

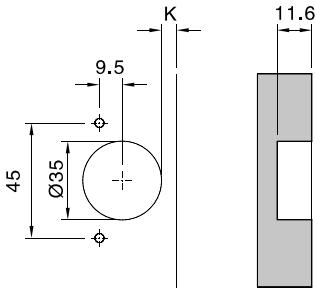
NEY Scotland
Block 2 Units 1-2-3
Bandeath Ind Est
Throsk, Stirling
FK7 7NP

t 01786 814 814
f 01786 814 812
e scotland@ney.co.uk



- Opening angle 110°
- Cup diameter 35mm
- Cup depth 11.2mm
- Nickel Coating

Cup distance: 45 x 9.5



CLIP ON



OVERLAY	0mm
Pack Qty: 250	
Item Number	Description
111040	No screw
111457	8mm Dowel

HALF OVERLAY	9mm
Pack Qty: 250	
Item Number	Description
111042	No screw

INSET	18mm
Pack Qty: 250	
Item Number	Description
111041	No screw

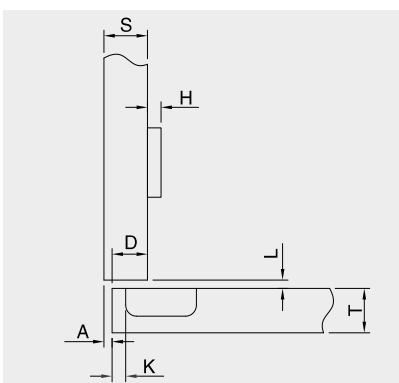
SLIDE ON



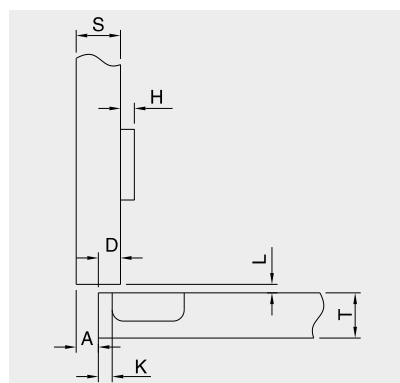
OVERLAY	0mm
Pack Qty: 250	
Item Number	Description
265876	No screw

HALF OVERLAY	9mm
Pack Qty: 250	
Item Number	Description
265885	No screw

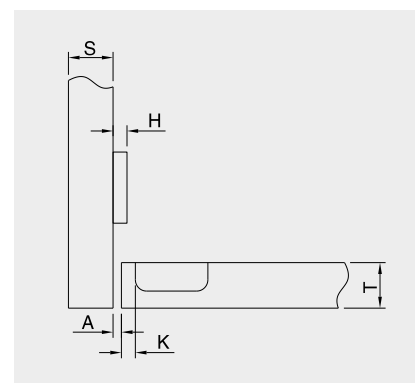
INSET	18mm
Pack Qty: 250	
Item Number	Description
265888	No screw



Formula: $H = 13 + K - D$



Formula: $H = 5 + K - D$



Formula: $H = 2 + K + A$

Calculation tables

D \ K	3	4	5	6
0	16	17	18	19
2	14	15	16	17
4	12	13	14	15

D \ K	3	4	5	6
0	8	9	10	11
2	6	7	8	9
4	4	5	6	7

A \ K	3	4	5	6
0	-1	-2	-3	-4
2	1	0	-1	-2
4	3	2	1	0